

GOVERNMENT OF NAGALAND
FAZL ALI COLLEGE
MOKOKCHUNG, NAGALAND

INSTITUTIONAL SSS ANALYSIS REPORT

The Feedback monitoring Cell conducts regular SSS based on the guidelines of NAAC. This feedback is very important to assess the learning outcomes of the students with the changing times and also to obtain grievances that can be remedied and action taken promptly.

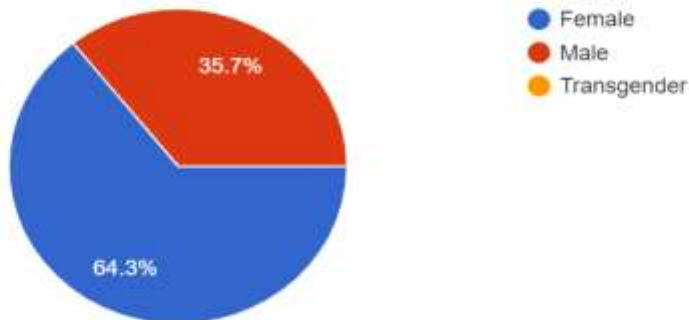
ANALYSIS:

- There were 485 responses. The survey started on 23rd September 2021 and ended on 6th October 2021. There were more female respondents than males.

Gender

485 responses

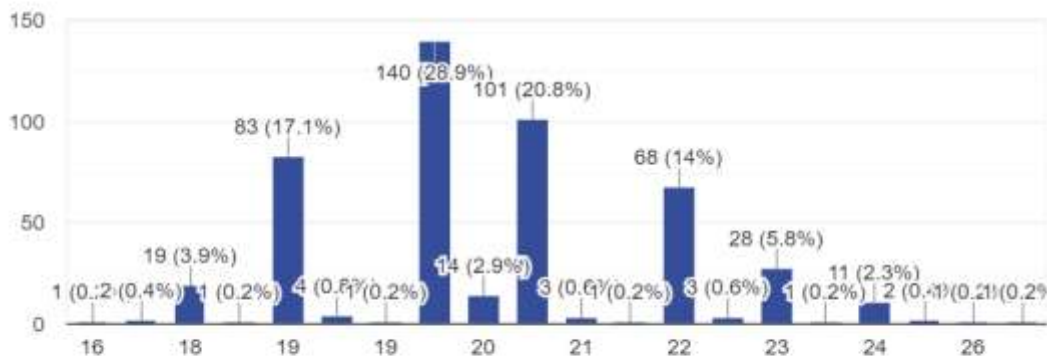
 Copy



Age (in years)

485 responses

 Copy

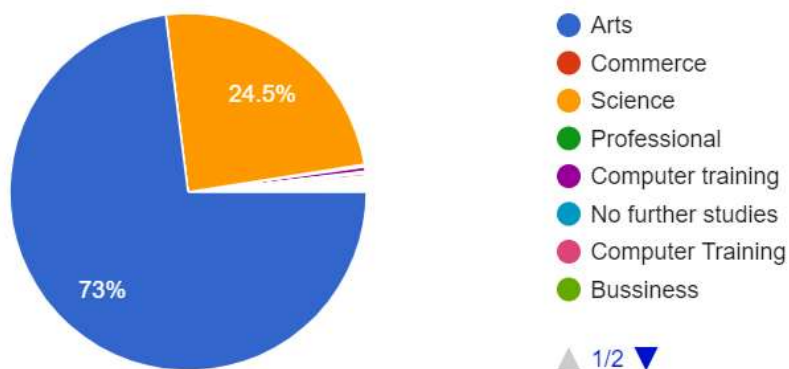


- More students are enrolled in the Arts stream since there are more sanctioned seats for Arts stream.

What subject area are you currently pursuing?

 Copy

485 responses



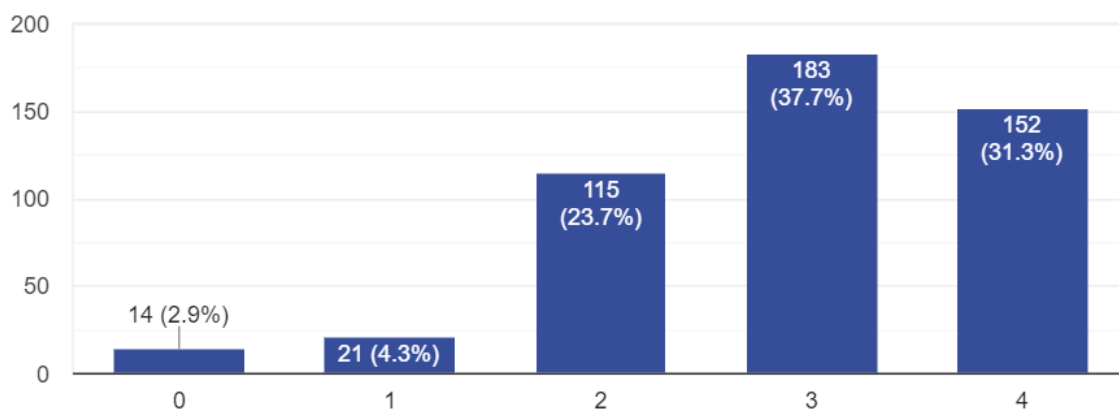
- On Teaching-Learning and Evaluation, on a scale of 0-4, the syllabus coverage was good.

Criterion II – Teaching–Learning and Evaluation

How much of the syllabus was covered in the class?

 Copy

485 responses

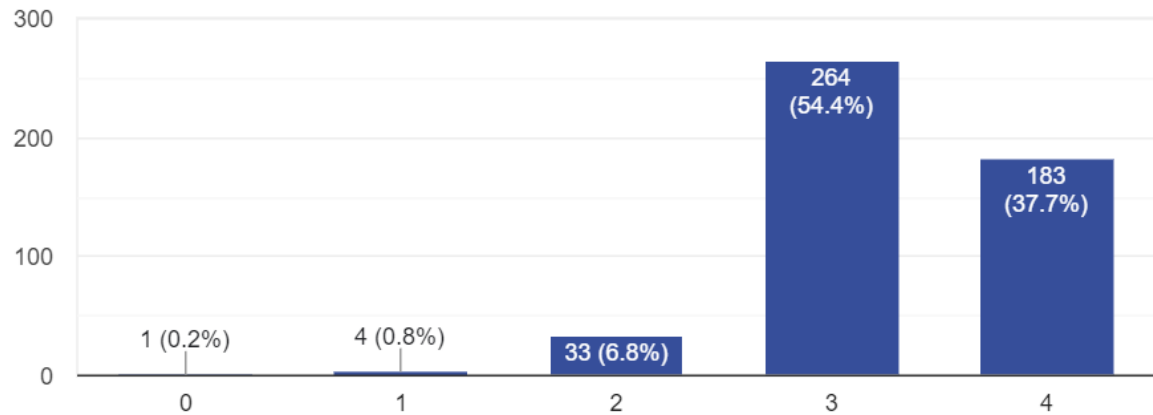


- As to the query of hoe well prepared the teachers were in the classroom, 54.4% responded that it was good, while 37.7% responded very good.

How well did the teachers prepare for the classes?



485 responses

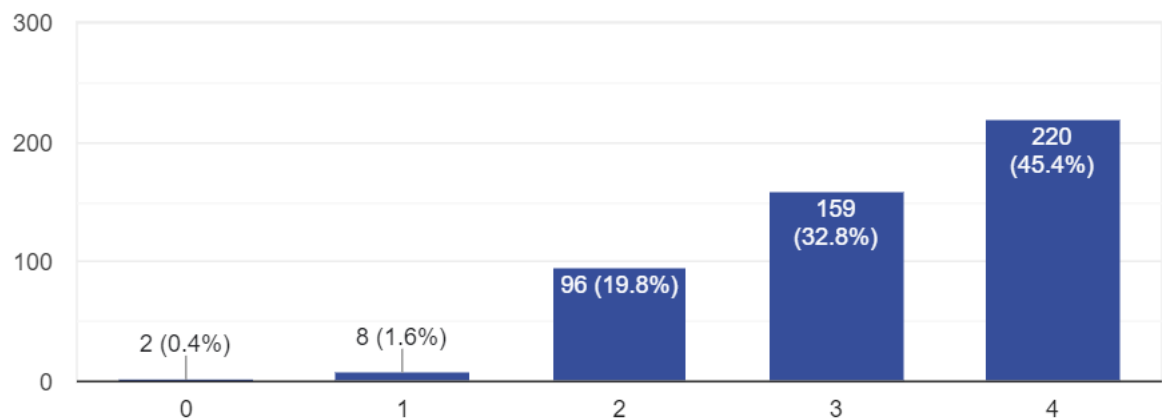


- The communication skills of the teachers were very good.

How well were the teachers able to communicate?



485 responses

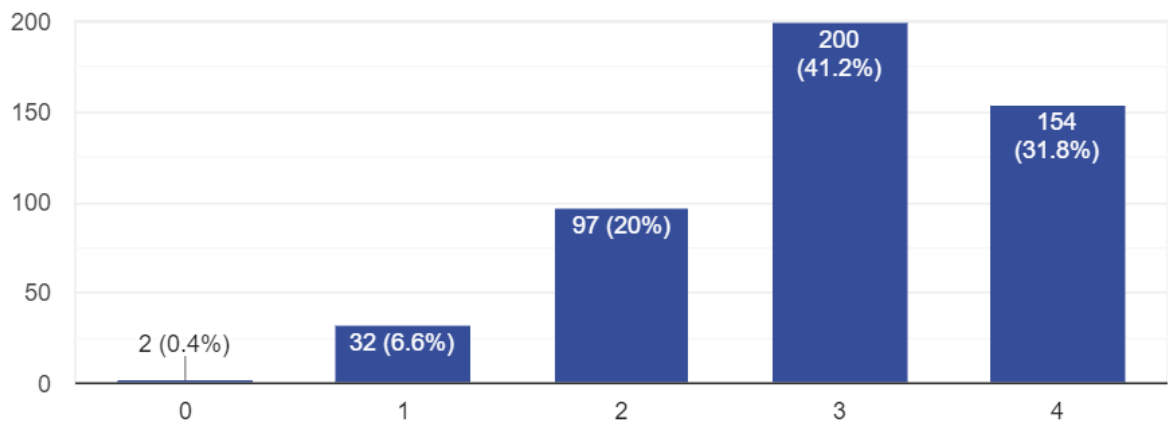


- The teacher's approach to teaching is good.

The teacher's approach to teaching can best be described as



485 responses

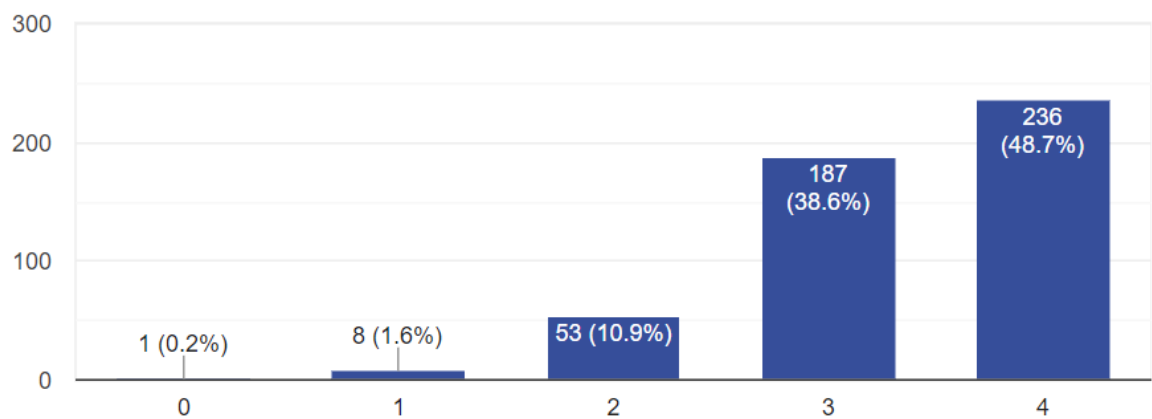


- Teachers are very fair during the evaluation process of the internal assessments.

Fairness of the internal evaluation process by the teachers.



485 responses

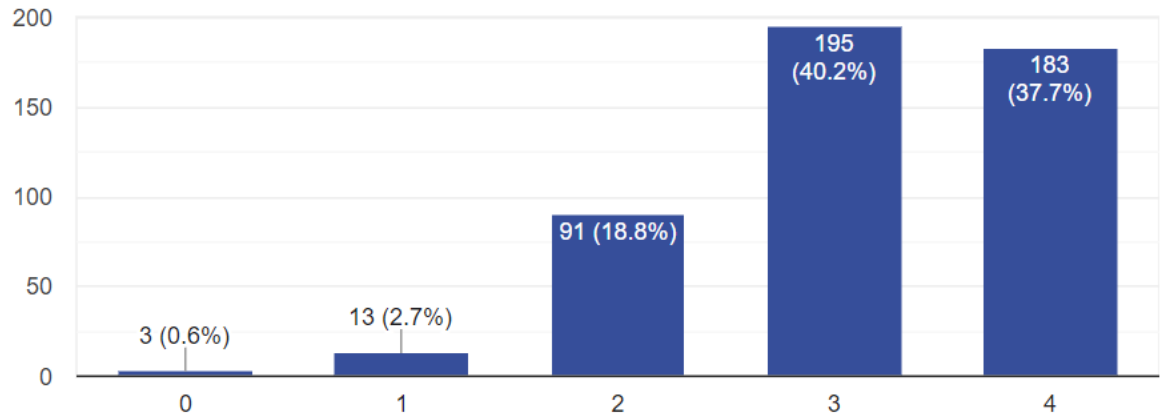


- As to the question of the institution providing multiples opportunities to grow, the response is very good.

The institution provides multiple opportunities to learn and grow.



485 responses

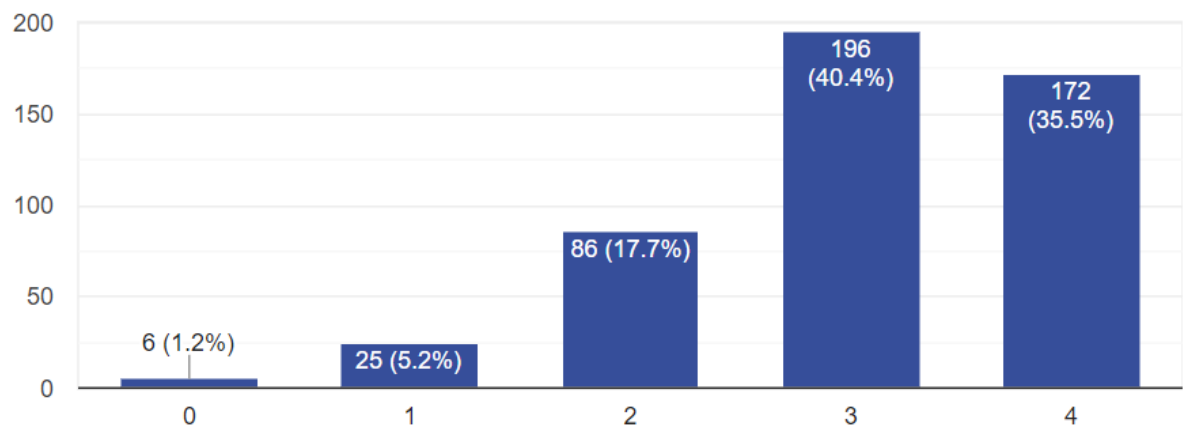


- Teachers are good at communicating expected competencies, course outcomes and programme outcomes to the students,

Teachers inform you about your expected competencies, course outcomes and programme outcomes.



485 responses

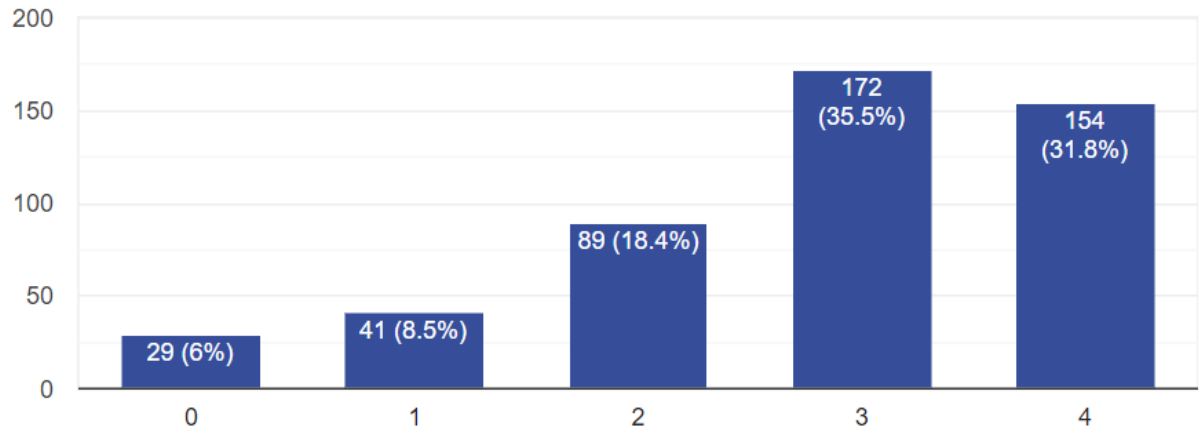


- Most mentors do a necessary follow-up with an assigned task to follow.

Your mentor does a necessary follow-up with an assigned task to you.



485 responses

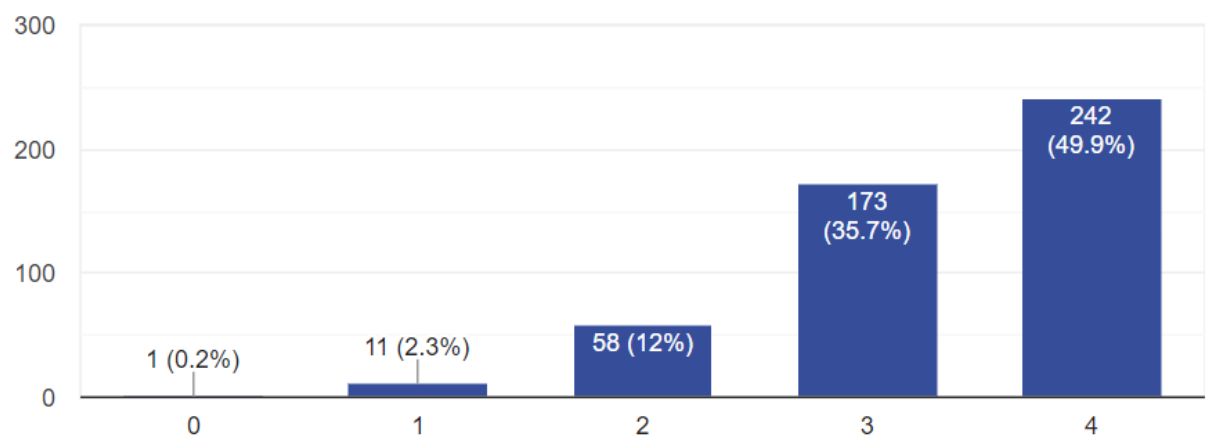


- Maximum number of teachers illustrate the concepts through examples and applications.

The teachers illustrate the concepts through examples and applications.



485 responses

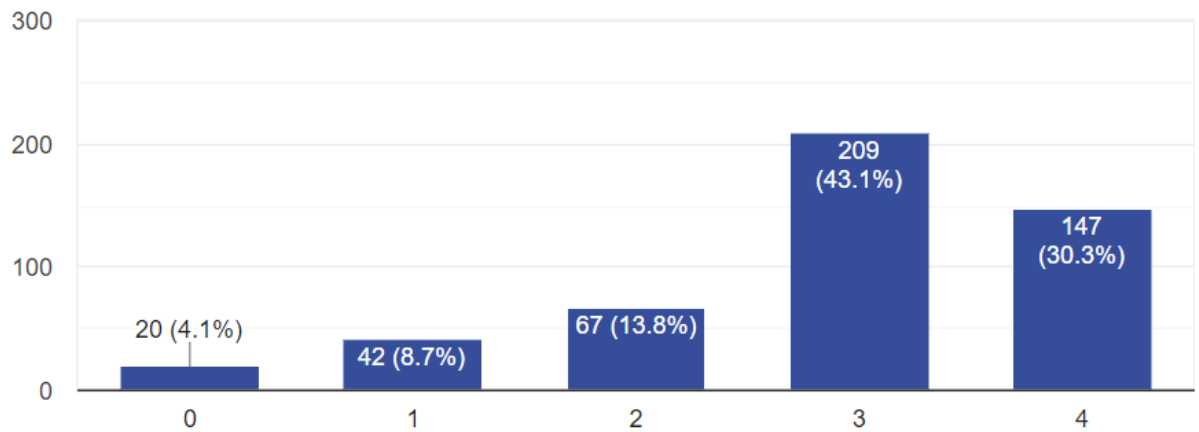


- Most teachers identify the strengths of students and provide right level of challenges.

The teachers identify your strengths and encourage you with providing right level of challenges.



485 responses

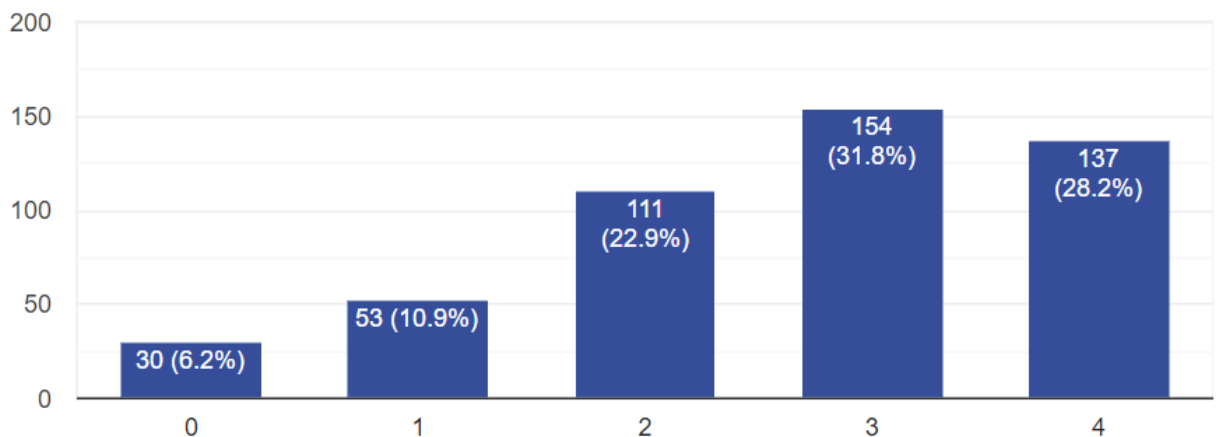


- Most teachers are able to identify the weaknesses of students and help them overcome them.

Teachers are able to identify your weaknesses and help you to overcome them.



485 responses

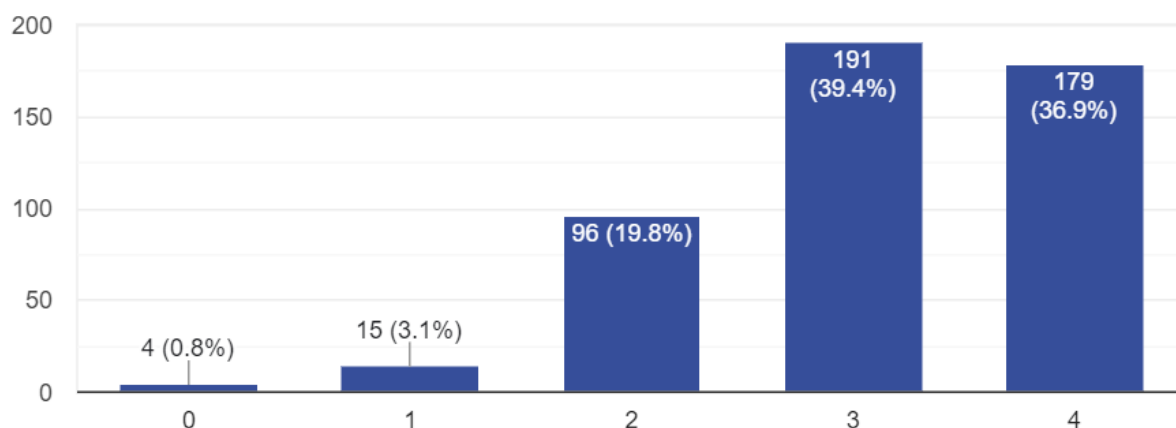


- Students are allowed to participate in the monitoring, review and continuous quality improvement of the teaching-learning process.

The institution makes effort to engage students in the monitoring, review and continuous quality improvement of the teaching learning process.



485 responses

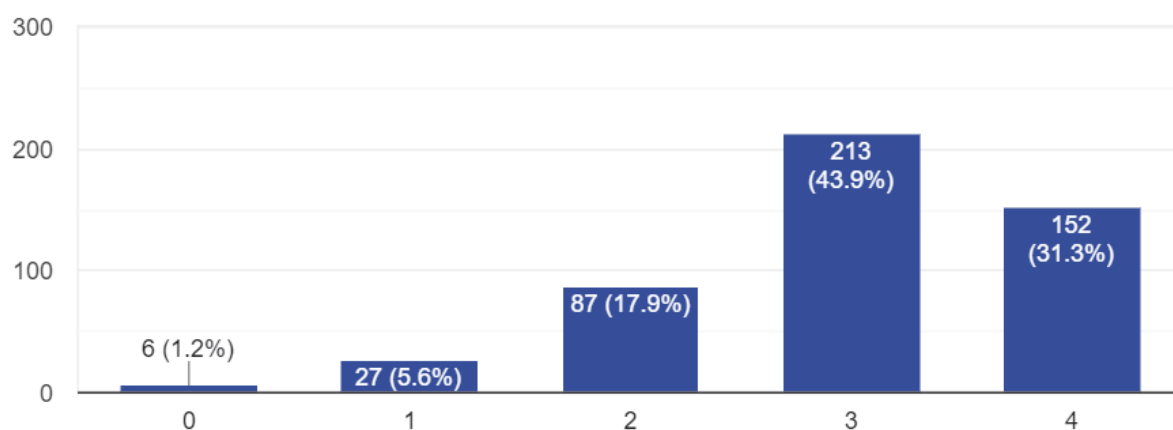


- Use of student centric methods is good.

The institute/ teachers use student centric methods, such as experiential learning, participative learning and problem solving methodologies for enhancing learning experiences.



485 responses

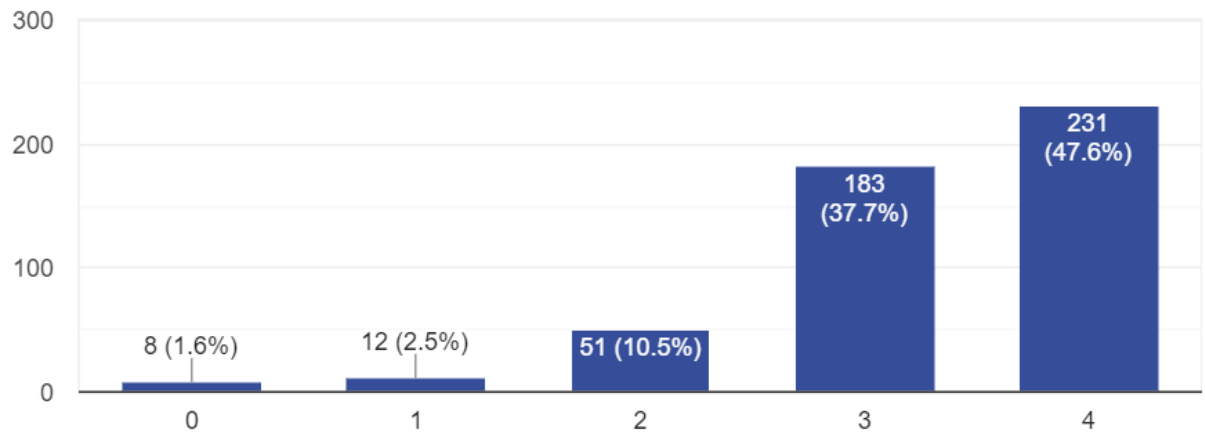


- Encouragement of students to participate in extracurricular activities is very good.

Teachers encourage you to participate in extracurricular activities.



485 responses

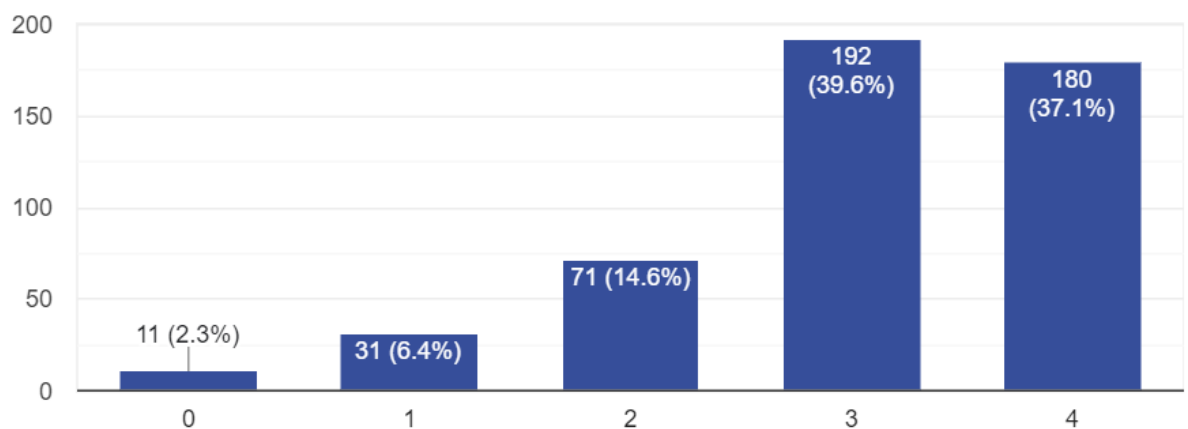


- Appreciable efforts are made by the institute to inculcate soft skills, life skills and employability skills.

Efforts are made by the institute/ teachers to inculcate soft skills, life skills and employability skills to make you ready for the world of work.



485 responses

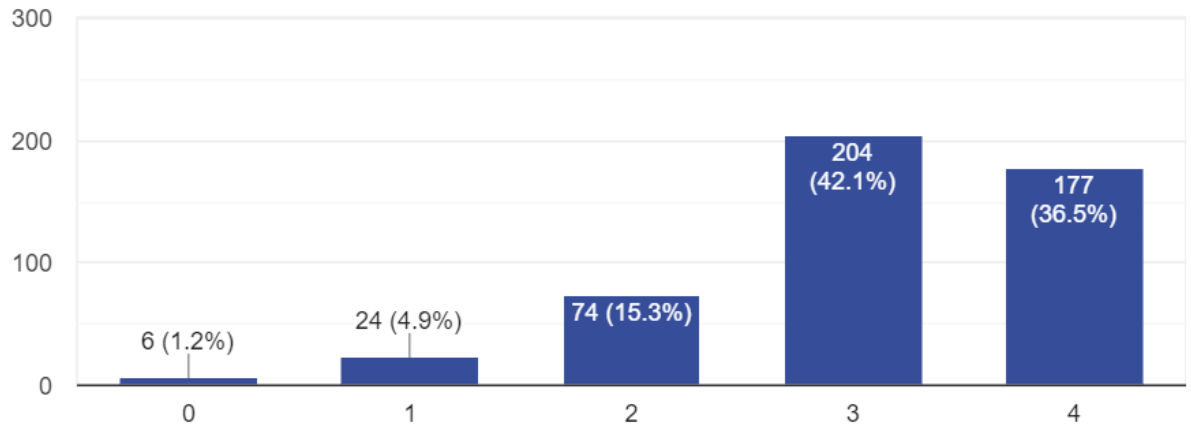


- A greater percentage of teachers use ICT tools such as LCD, Multimedia, etc. while teaching.

What percentage of teachers use ICT tools such as LCD projector, Multimedia, etc. while teaching.



485 responses

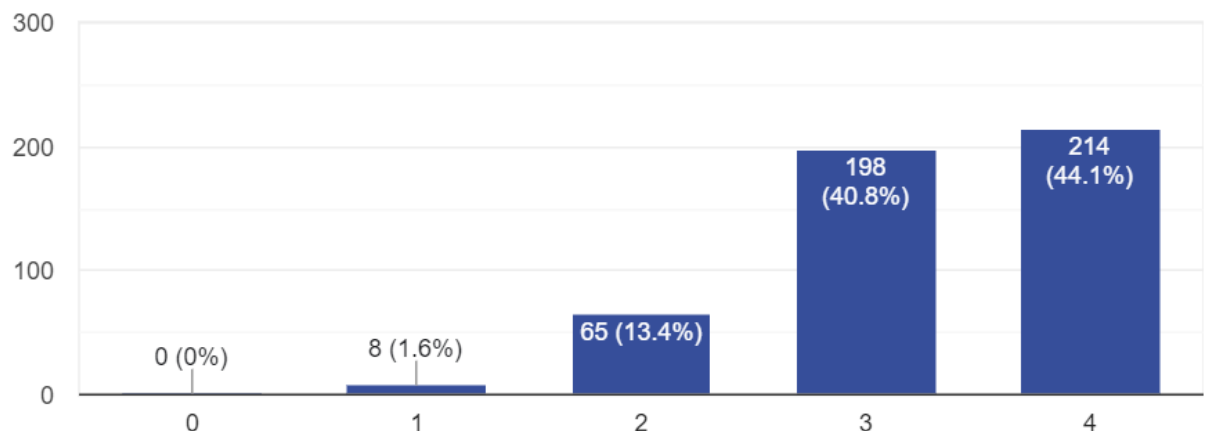


- Majority of the students agree that the overall quality of teaching-learning is very good.

The overall quality of teaching-learning process in your institute is very good.



485 responses



CONCLUSION:

The overall response of the students towards the teaching-learning queries is very positive.

ACTION TAKEN:

Departmental Analysis of final semester students has been collected in order to compare the SSS feedback with the result analysis.

Dated: Mokokchung

The 10th August 2022



(Dr I. Wati Imchen)
Principal
Fazl Ali College



(Dr Lanurenla)
Coordinator, IQAC
Fazl Ali College